

Gas Canisters/ Spray Cans



A hole will be safely opened in the canister at the processing facility before retrievable metal scraps are recycled.

*Up to about 45 cm x 55 cm
*Up to LL size transparent or semi-transparent bag

Applicable items

- **Completely used (empty)** portable stove gas canisters, spray cans (aerosol cans) for hair products, insecticides, deodorants, paints, etc.

*Items cannot be collected unless completely empty.



Take items out on the collection day between **5:00 AM** and **8:00 AM!**



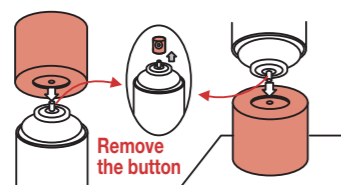
FAQ

Q How do I empty the contents completely?
A Empty remaining product from spray cans using an emptying mechanism outdoors in a well-ventilated place. For more information, please refer to the Aerosol Industry Association of Japan website.

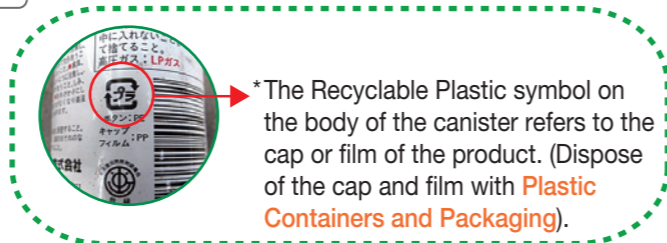
For details about emptying the contents of a spray can...
Aerosol Industry Association of Japan



Aerosol Industry Association of Japan Search



Example of how to empty a spray can



*The Recyclable Plastic symbol on the body of the canister refers to the cap or film of the product. (Dispose of the cap and film with **Plastic Containers and Packaging**).

Q How should I dispose of an old gas canister that I haven't used up completely?
A Do NOT dispose of the gas canister with the garbage unless it is completely empty. For information about the disposal method and use-by date of non-empty gas canisters, please consult with the retail store, sales or manufacturing company from which you purchased the item or the Japan Industrial Association of Gas and Kerosene Appliances, Gas Canister Customer Center. Alternatively, consult with your ward's Environmental Bureau Office about "gas canisters that you cannot use up."

For more information about portable stove gas canisters...

Japan Industrial Association of Gas and Kerosene Appliances
Gas Canister Customer Center

Japan Industrial Association of Gas and Kerosene Appliances Search

TEL: 0120-14-9996

Hours: Weekdays 10:00 - 17:00

Disposing of gas canisters and spray cans



1 Completely **use up the contents**

If directions for emptying the can are written on the spray can, please follow the directions.

2 You **do not need to make a hole** in the can



3 Separate it from **Non-burnable Garbage** and put it in a **see-through bag (up to 15L)**



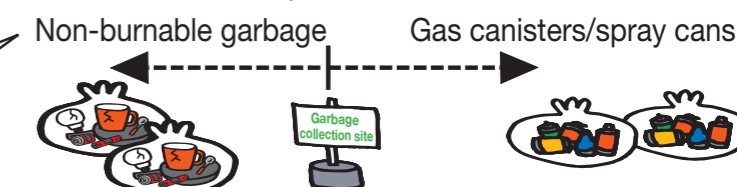
*Example of a see-through bag

4 Place it **apart from Non-burnable Garbage** at the garbage collection site



*Do not use a designated garbage bag

<Illustrated example>



For safety reasons, different garbage collection trucks are used to pick up non-burnable garbage and gas canisters/spray cans!

Garbage collection trucks have been catching on fire!

When non-burnable garbage and gas canisters/spray cans disposed of together, fire incidents involving the garbage collection truck occur.

There is a risk of damage being caused to nearby homes and passerby due to the explosion and flames.

Please be certain to separate these items from non-burnable garbage.

